

School Day Calculations

2022

SCHOOL DAY


Teacher



Weekly highlights are generated every Sunday. They are calculated based on that week's answers regardless of the number of answers.

Displayed is the **lowest scoring question**, and the **highest scoring questions**.

The **Monthly focus area** is generated on the first day of every month. It is calculated based on the data from the previous month regardless of the number of answers.

Displayed is the **lowest scoring topic**.

The same topic cannot be displayed two months in a row. In this case, the second lowest scoring topic is selected. After one month the same topic can be displayed again.

Weekly Highlights



"I can get help if I'm overwhelmed"

When students feel overwhelmed, they are often unable to complete their schoolwork effectively and efficiently. Multiple variables can contribute to feeling overwhelmed, from academic stress to physical ailments or emotional distractions. As a teacher, it is important to be a source of stability and security in seemingly overwhelming times. Encourage students to discuss sensitive issues with a safe adult. As their teacher, you may be that person. Allow your students to speak to you not only about the amount of work you are assigning but also about their emotional wellbeing.

[Discussion Support](#)[Analytics](#)

"I receive helpful feedback from my teachers"

In order to guide your students in their learning, it is essential to provide quality feedback on their work and comprehension. Feedback is a critical part of helping your students grow. It can help provide a roadmap for future success.

[Discussion Support](#)[Analytics](#)

Monthly Focus Area



Psychological Wellbeing

This Monthly Focus Area has been chosen based on your students answers from the previous four weeks. It is the area with the lowest score, in other words the area your group would benefit the most from developing.

Use the ready-made Lesson Plan to develop the area in question in just 45 minutes, or click on Analytics to dive deeper into the underlying statistics.

[Lesson Plan](#)[Analytics](#)

70

Learning

65

Social and
Emotional
Skills

75

Social
Relationships

73

Wellness

Student Activity

2272

Answers in the past four weeks
+50.8% change since the previous four weeks



Attend our Personal
Development course!



Join Our Community

The first time, **Area Scores** are calculated directly when 5 students or more have answered. After that, they are updated every Sunday.

They are the average from the previous week. Progress (arrows up / down) is calculated by comparing the score to the previous week. If the previous week has no answers, progress will be calculated based on up to 4 weeks ago.

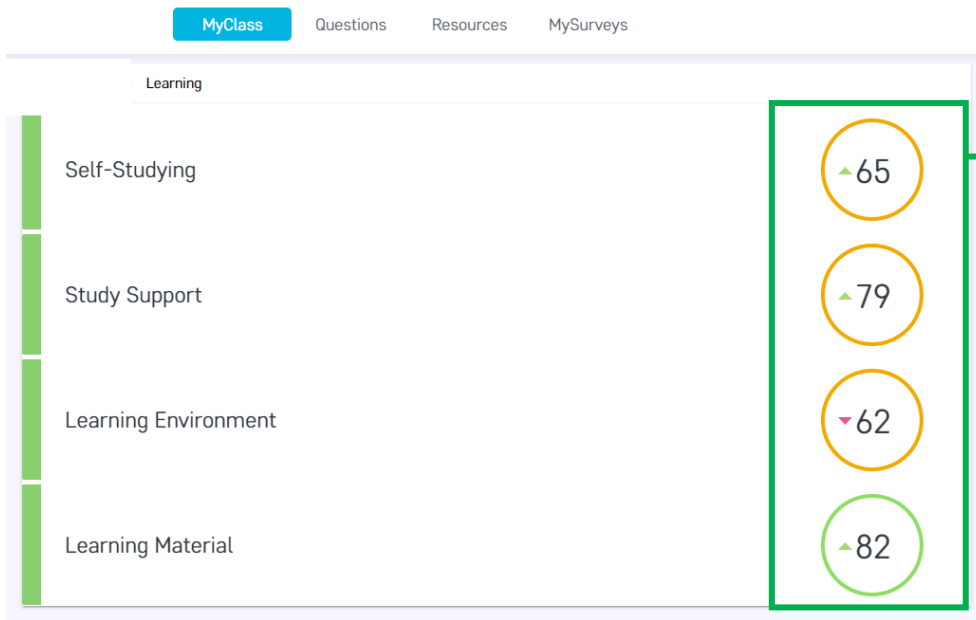
Example: Monday week 5 the score is the average from week 4, week 3 is empty, so the progress is the change between week 2 and week 4.

Student activity is real time and updates every time the app is opened, or the browser is refreshed.

It is the sum of all answers collected for the class during the past 4 weeks. Progress (change) is calculated by comparing the number of answers to the number of answers from the previous 4 weeks.

Example: Monday week 9 the number of answers is from week 5, 6, 7, and 8. The progress is the change between those weeks and week 1, 2, 3, and 4.





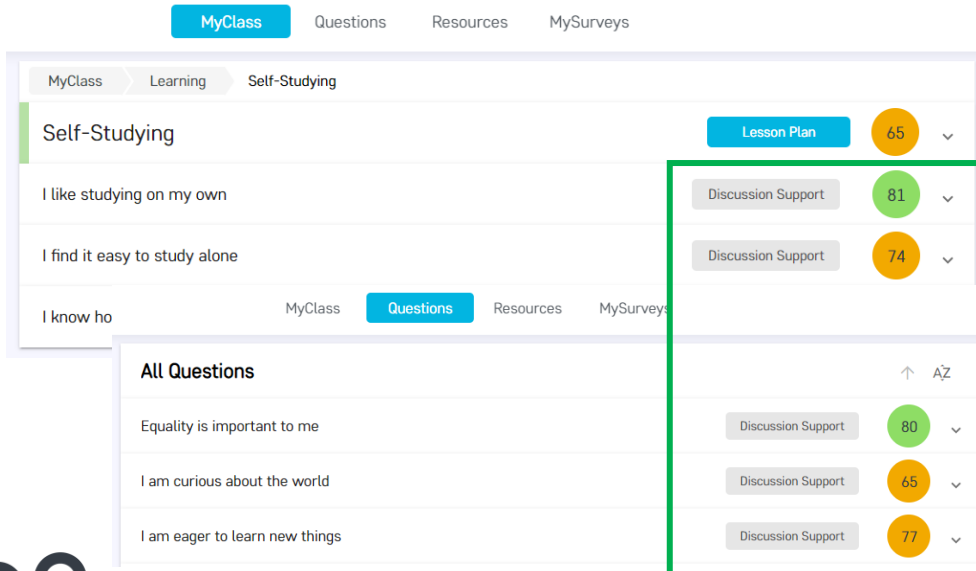
The first time, **Topic Scores** are calculated directly when 5 students or more have answered. After that, they are updated every Sunday.

They are the average from the previous week. Progress (arrows up / down) is calculated by comparing the score to the previous week. If the previous week has no answers, progress will be calculated based on up to 4 weeks ago, the same way Area scores in MyClass are calculated.

A **Your weekly School Day summary** email is sent out to teachers every Monday at 9 AM local time.

It contains the new class highlights with a direct link to the discussion support, and the new class scores calculated over the weekend.

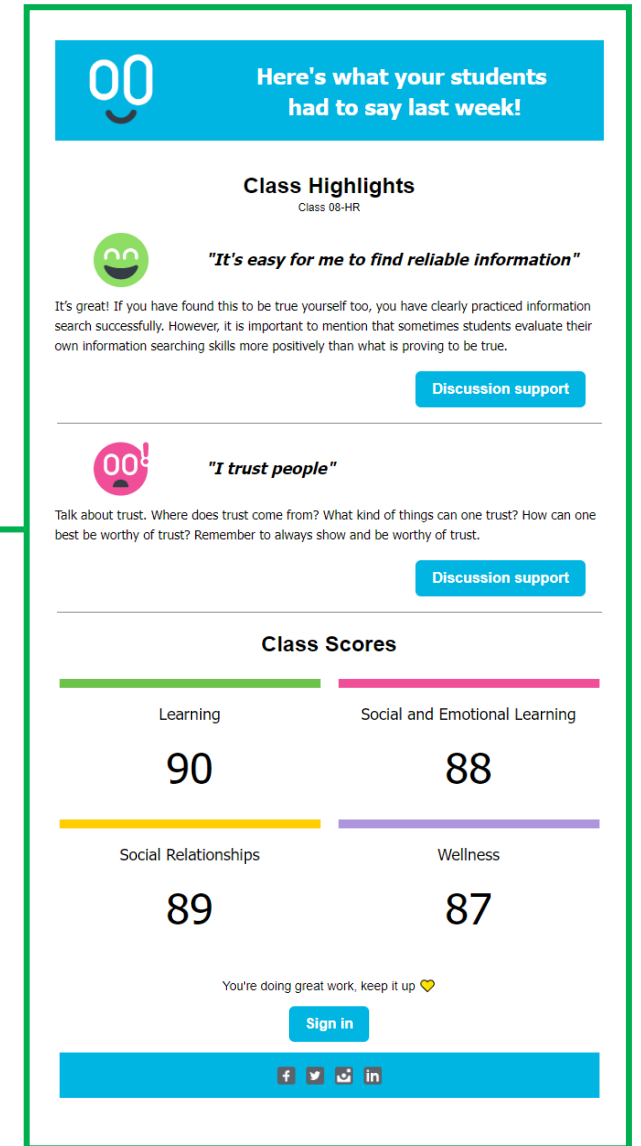
The weekly summary email is sent out automatically, but teachers have the option to unsubscribe if they wish to not receive them in the future.



Question Scores are calculated in real time and updates every time the app is opened, or the browser is refreshed.

They are the average from the last 28 days.

If a score is not calculated, it means that there are not enough answers. This will also affect the Topic and Area scores.



Student



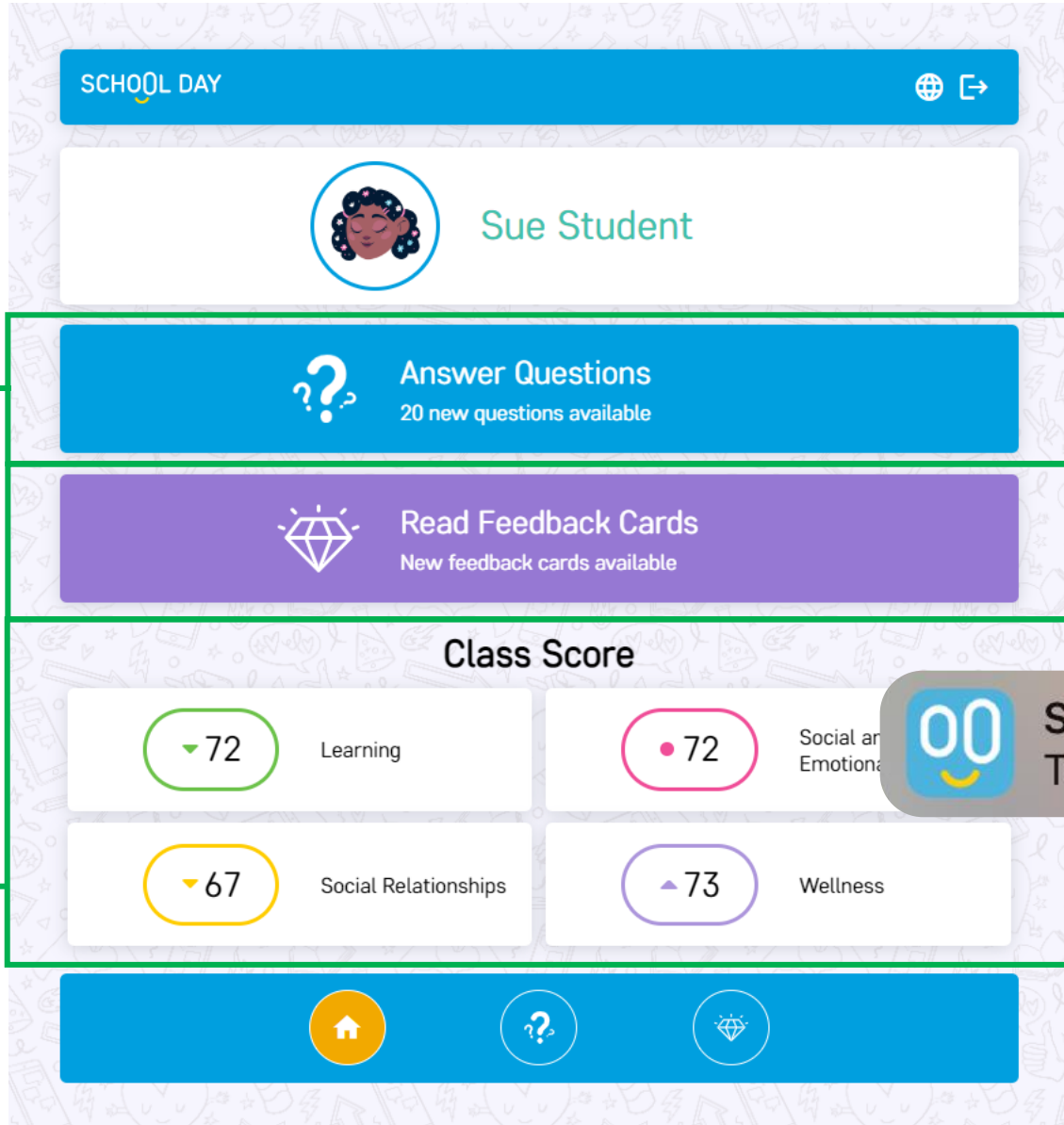


Questions are generated randomly every week until the student has answered all questions. Questions are available every day between 1 AM and 11 PM local time.

New questions are available 8 hours after a student has answered, meaning a student can theoretically answer twice a day, however we strongly recommend keeping a cadence of answering once per week.

The first time, **Class Scores** are calculated directly when 5 students or more have answered. After that, they are updated every Sunday.

They are the average from the previous week. Progress (arrows up / down) is calculated by comparing the score to the previous week. If the previous week has no answers, progress will be calculated based on up to 4 weeks ago.



Feedback Cards are generated every Sunday. They are calculated based on that week's answers regardless of the number of answers.

Displayed is the lowest scoring question, and the highest scoring questions.

Mobile Push Notifications are sent out every Monday at 9 AM local time. If the student has not replied by the end of Wednesday, another push notification is sent on Thursday at 9 AM local time.

Push notifications are selected randomly to give as much variety as possible.

NOTE! Push notifications are only available when using the native mobile app.

Principal / Leader



School activity is real time and updates every time the app is opened, or the browser is refreshed.

It is the sum of all answers collected for the class during the past 4 weeks. Progress (change) is calculated by comparing the number of answers to the number of answers from the previous 4 weeks.

Example: Monday week 9 the number of answers is from week 5,6,7, and 8. The progress is the change between those weeks and week 1,2,3, and 4.

Class Activity is real time and updates every time the app is opened, or the browser is refreshed.

High activity = has answered 3-4 times the past 4 weeks
Good activity = has answered 2 times the past 4 weeks
Low activity = has answered 1 times the past 4 weeks
Passive = has not answered a single time the past 4 weeks.

School Scores are calculated every Sunday. They are the average from the previous week. Progress (arrows up / down) is calculated by comparing the score to the previous week. . If the previous week has no answers, progress will be calculated based on up to 4 weeks ago.

Example: Monday week 3 the score is the average from week 2, and the progress is the change between week 1 and week 2.

